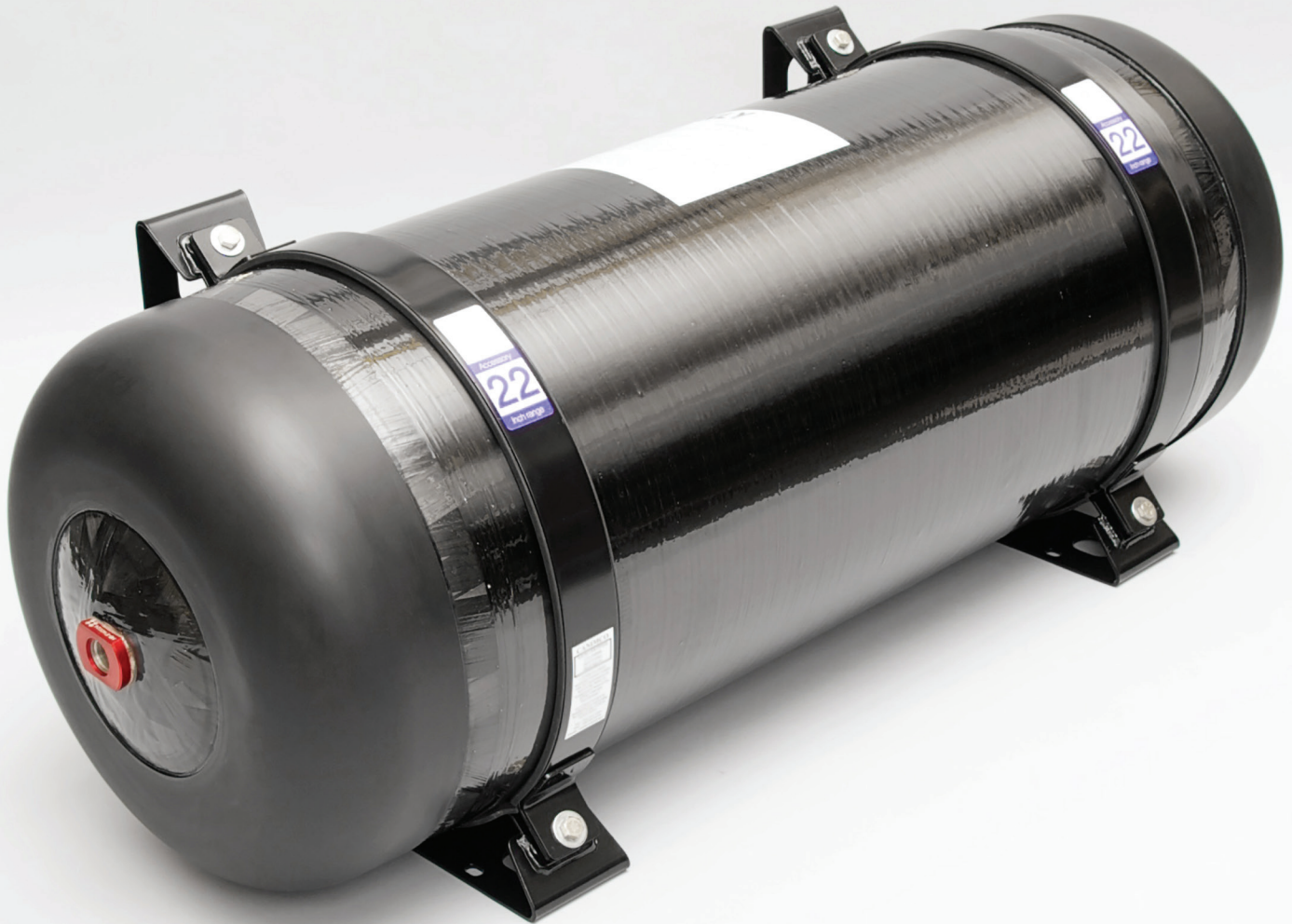




Specification Data:

G-Stor® Go Alternative Fuel Cylinders



Giving you more **flexibility**

Luxfer's G-Stor® Go Type 4 composite cylinders for compressed natural gas are available in an extensive range of sizes suitable for medium-duty and heavy-duty vehicle fuel systems.

G-Stor® GO

TYPE 4 CYLINDERS

Luxfer's G-Stor® Go Type 4 composite cylinders for compressed natural gas (CNG) are available in an extensive range of sizes suitable for medium-duty and heavy-duty vehicle fuel systems.

Luxfer's G-Stor® Go Type 4 composite cylinders for compressed natural gas offer market-leading storage efficiency and are available in a range of sizes ideal for refuse trucks, class-8 heavy-duty over-the road and medium-duty natural gas vehicle fuel systems. Advanced G-Stor® Go cylinders are the best choice for end-users and fuel system manufacturers requiring cylinders with outside diameters of 17 inches or larger.

Luxfer's G-Stor® Go Type 4 cylinders have industry-leading weight and volume performance—giving you more distance and vehicle payload.

Available in an extensive range, Luxfer's lightweight G-Stor® Go cylinders are built around a purpose-engineered aluminum alloy and polymer liner interface designed to ensure the highest levels of performance and gas retention. Luxfer's Type 4 liners are purposely dimensioned to maximize capacity.

Cylinders feature high-strength carbon fiber and epoxy matrix overwrap instead of the combination carbon and fiberglass hybrid overwrap often seen in conventional products. Designed with the optimal balance between weight and durability, our G-Stor® Go product offering is the broadest in the NGV industry, ranging from 17 inches to 27 inches in diameter and from 40 inches up to 140 inches in length, among the longest in the industry by diameter class.

Benefits of G-Stor® Go

- Increases capacity while reducing cylinder weight.
- Lightweight cylinders designed to offer the optimal balance between weight and durability.
- Larger cylinder diameters from 17 to 27 inches and lengths from 40 to 140 inches.
- A lightweight boss and high-density polymer liner interface designed to ensure the highest levels of performance and gas retention.

Diameter		Length		CNG capacity		Weight		Water volume	DGE equivalent	GGE equivalent	Service pressure	Neck mount	Part #
in	mm	in	mm	ft ³	m ³	lb	kg	l	US gallon	US gallon	bar		
16.6	422	82	2080	2375	67.3	115	52.1	228	17.1	19.2	248	Yes	G1782-2
22.2	564	60	1524	2994	85	142	64.5	287	21.5	24.1	248	No	G2260-2
22.2	564	86	2184	4266	121	195	88.6	410	30.7	34.4	248	Yes	G2286-2
26.5	673	60	1524	3913	111	193	87.7	376	28.2	31.6	248	Yes	G2660-2
26.5	673	80	2032	5723	162	262	119.1	550	41.2	46.2	248	Yes	G2680-2
26.5	673	90	2286	6639	188	285	129.5	638	47.8	53.5	248	Yes	G2690-2
26.5	673	108	2743	8282	235	358	162.7	795	59.6	66.8	248	Yes	G26108-2
26.5	673	120	3048	9365	265	399	181.4	900	67.4	75.5	248	Yes	G26120-2
27	685	81	2057	6025	171	278	126.4	579	43.3	48.6	248	Yes	G2781-2

All parts have a service pressure of 248 bar.

Density of CNG = 0.0424 lb/cu-ft. 1 U.S. gallon of diesel/gasoline = 139/124 scf of CNG.

All cylinders are dual-ported, unless otherwise noted, with boss thread connection = 1 1/8 - 12 UNF - 2B.

Other sizes and custom cylinder lengths and size configurations are available upon request with minimum order. Approved pressure relief device must be used for fire protection.

Cylinder specifications are nominal values and are subject to change without notice.